

# AUTO SKILLS CENTER NAWS CHINA LAKE

Bldg. 02733 • 760-939-2346

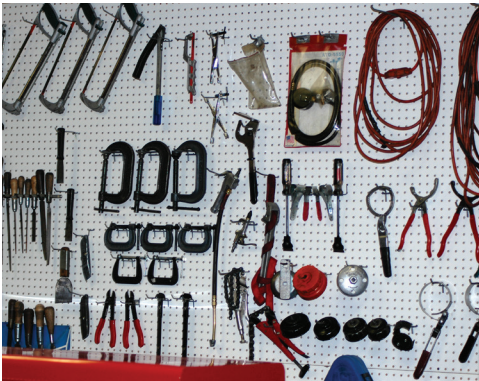
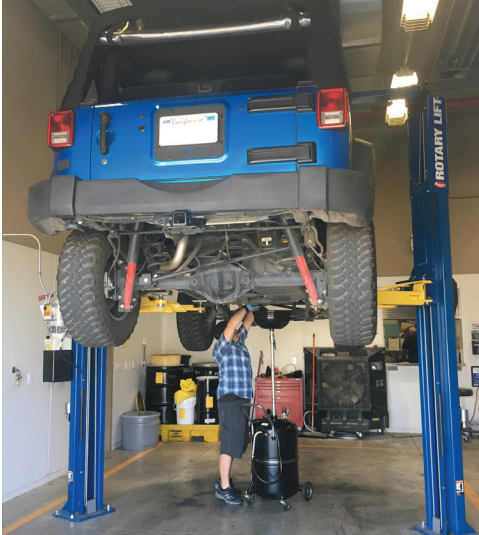
Friday-Saturday: 9 am-6 pm

Tuesday-Thursday: By Appointment Only

Sunday, Monday & Holidays: Closed

Your Automotive Skills Center helps you do quick & simple work. Get professional one-on-one instruction & technical assistance. Auto Skills is not a drop-off service program.

Stalls close & cleanup begins  
30 minutes before closing.



## STALL & LIFT RENTALS

	MIL	DOD	OTHER
Lift per half hour . . . . .	\$3. . . . .	\$4.25 . . . .	\$6

## AUTOMOTIVE DIAGNOSTICS

ALL DATA CD-ROM Repair System Paper Per Sheet . . . . .	.25¢ . . . . .	.35¢ . . . . .	.40¢
Automotive computer analyzers-diagnostics . . . . .	\$50. . . . .	\$60 . . . . .	\$80
Automotive computer analyzers-pull codes only . . . . .	\$25. . . . .	\$35 . . . . .	\$55
Engine analyzer . . . . .	\$8. . . . .	\$12 . . . . .	\$18
Timing lights . . . . .	\$5. . . . .	\$6 . . . . .	\$8
Fuel injection tester . . . . .	\$10. . . . .	\$14 . . . . .	\$16
Vacuum pump . . . . .	\$5. . . . .	\$7 . . . . .	\$10

## TRANSMISSION SYSTEM DIAGNOSTICS

T-tech transmission service unit . . . . .	\$65. . . . .	\$80 . . . . .	\$110
--	---------------	----------------	-------

## ELECTRICAL SYSTEM DIAGNOSTICS

Battery/electrical system testing . . . . .	\$7. . . . .	\$10 . . . . .	\$13
Battery booster pack . . . . .	\$7. . . . .	\$15 . . . . .	\$20

## COOLING SYSTEM DIAGNOSTICS

Coolant recycler and system tester . . . . .	\$50. . . . .	\$60 . . . . .	\$80
--	---------------	----------------	------

## BRAKE SYSTEM MAINTENANCE

Resurface rotors/drums off vehicle			
• Most cars and light trucks . . . . .	\$8. . . . .	\$9 . . . . .	\$10
• ¾ ton and 1 ton . . . . .	\$10. . . . .	\$12 . . . . .	\$14
Resurface rotors on vehicle . . . . .	\$12. . . . .	\$17 . . . . .	\$22
Pressure bleeding . . . . .	\$15. . . . .	\$25 . . . . .	\$40
Manual brake bleeder kit . . . . .	\$5. . . . .	\$7 . . . . .	\$10

## STEERING/SUSPENSION/DRIVETRAIN MAINTENANCE

Shock strut spring compressor per strut . . . . .	\$5. . . . .	\$8 . . . . .	\$20
Hydraulic press . . . . .	\$8. . . . .	\$10 . . . . .	\$20
Puller or pusher . . . . .	\$5. . . . .	\$7 . . . . .	\$20
Grease gun . . . . .	\$1. . . . .	\$2 . . . . .	\$5

## TIRE & WHEEL CENTER/MAINTENANCE

Tire mounting machine per tire			
• Standard tire . . . . .	\$10. . . . .	\$13 . . . . .	\$15
• Low profile tire 45-55 series . . . . .	\$13. . . . .	\$16 . . . . .	\$21
• Motorcycle/ATV/small tires . . . . .	\$12. . . . .	\$15 . . . . .	\$17
• Computer balance per tire . . . . .	\$7. . . . .	\$9 . . . . .	\$11
• Tires 32" and larger . . . . .	\$9. . . . .	\$11 . . . . .	\$13
Four tires mount and balance (Appointment Required)			
• Standard tires . . . . .	\$55. . . . .	\$70 . . . . .	\$85
• Low profile 45-55 series . . . . .	\$70. . . . .	\$90 . . . . .	\$110
Tire repair . . . . .	\$7. . . . .	\$8 . . . . .	\$10
Air tools with hose or compressor per hour . . . . .	\$2. . . . .	\$3 . . . . .	\$6
Torque wrench . . . . .	\$2. . . . .	\$3 . . . . .	\$4
Per tire disposal fee . . . . .	\$1. . . . .	\$1 . . . . .	\$1

## METAL CENTER

Drill press, drill, bench grinder, band saw per unit per hour . . . . .	\$2. . . . .	\$4 . . . . .	\$8
---	--------------	---------------	-----

## CLEANING CENTER

Small parts steam cleaner per hour . . . . .	\$8. . . . .	\$12 . . . . .	\$15
--	--------------	----------------	------

## VEHICLE RESALE CENTER (LEMON LOT)

Lemon lot per vehicle for 30 days . . . . .	\$15. . . . .	\$20 . . . . .	\$20
---	---------------	----------------	------

## EMPLOYEE CLEAN-UP FEE

If you leave a mess, you pay the clean-up fee . . . . .	\$20. . . . .	\$20 . . . . .	\$20
---	---------------	----------------	------

SOLID HAZARDOUS WASTE DISPOSAL FEE . . . . .	\$1. . . . .	\$1 . . . . .	\$1
--	--------------	---------------	-----